

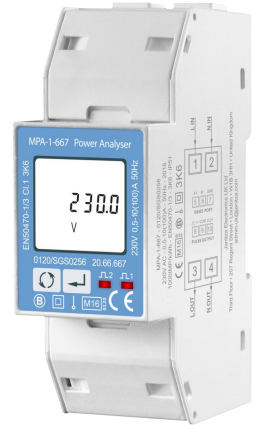
# MPA - MID Power Analyzer

## Single Phase, Direct Measurement

### MPA-1-667 Single Phase, 100 A

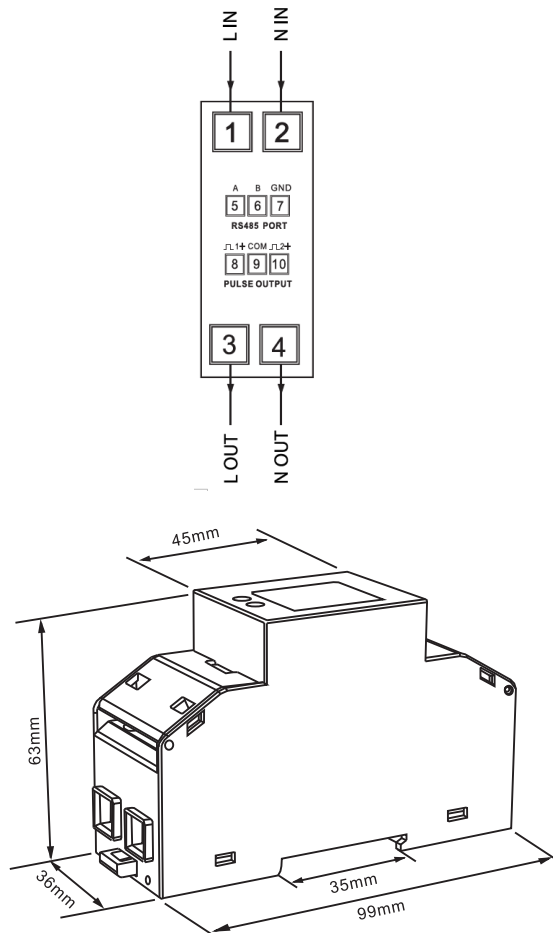
#### Single Phase Energy & Power Analyzer (1 + N)

- Direct connection up to 100A
- Digital Backlit Display
- RS-485 (Modbus RTU) Communication
- Width, 2 DIN modules
- Tested and approved per MID and IEC
- Dual Pulsed outputs



Voltage	Precision class	Outputs	Communication	Type	Part No.
176 to 276V AC	Class B (kWh) EC Directive 2004/22/EC	2 x Digital Inputs	RS-485 (Modbus RTU)	MPA-1-667	20.66.667

MPA-1-667



# MPA - MID Power Analyzer

## Three Phase, Direct Measurement, MPA-3-668 Three Phase 100 A

### Three Phase Energy & Power Analyzer (3 + N)

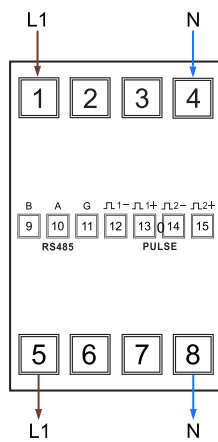
- Direct connection up to 100 A
- Digital Backlit Display
- RS-485 (Modbus RTU) Communication
- Width, 4 DIN modules
- Tested and approved per MID and IEC
- Dual Pulsed outputs



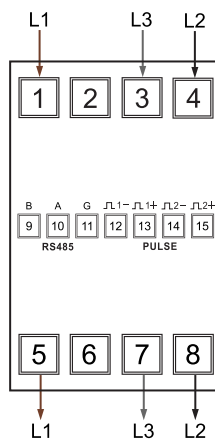
Voltage	Precision class	Outputs	Communication	Type	Part No.
176 to 276V AC	Class B (kWh) EC Directive 2004/22/EC	2 outputs	RS-485 (Modbus RTU)	MPA-3-668	20.66.668

### MPA-3-668

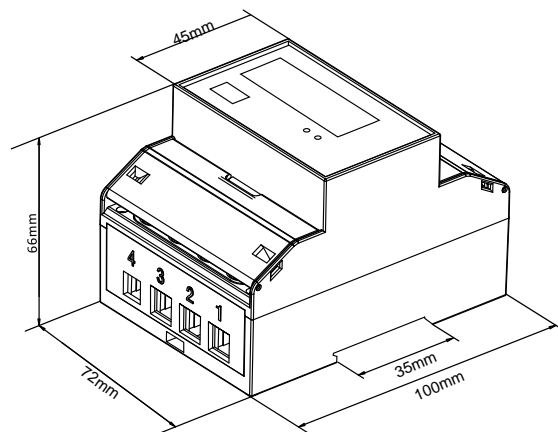
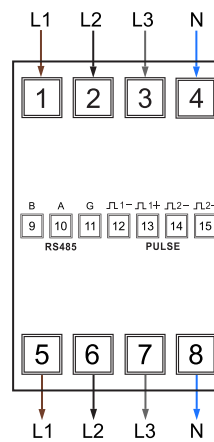
#### Single Phase 2-Wire



#### Three Phase 3-Wire



#### Three Phase 4-Wire



# MPA - MID Power Analyzer

## Three Phase, CT Measurement,

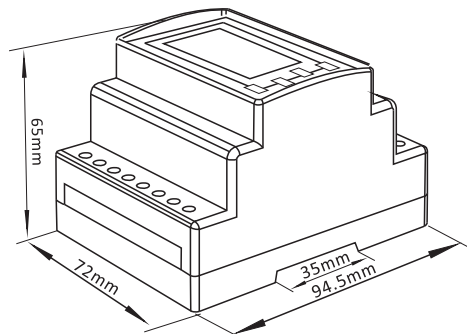
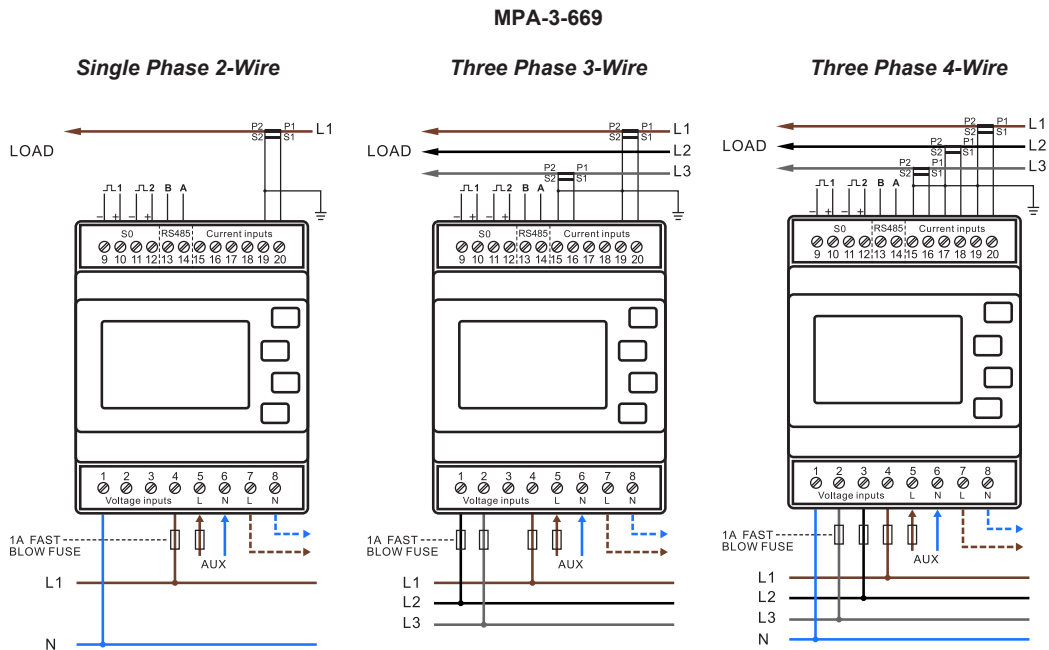
### MPA-3-669 - Three Phase 1A / 5A CT

#### Three Phase Energy & Power Analyzer (3 + N)

- Current Transformer connection, 1A / 5A CT
- Voltage Transformer Settings suitable for MV Installations
- Digital Backlit Display
- RS-485 (Modbus RTU) Communication
- Width, 4 DIN modules
- Tested and approved per MID and IEC
- Dual Pulsed outputs
- Optional Front Switchboard-Door Mount Kit



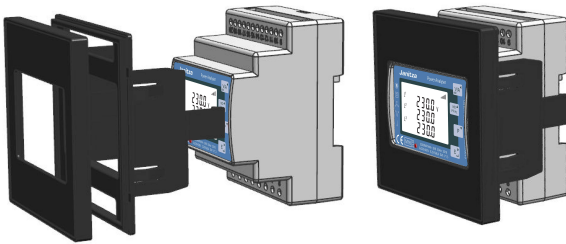
Voltage	Precision class	Outputs	Communication	Type	Part No.
176 to 276V AC	Class B (kWh) EC Directive 2004/22/EC	2 outputs	RS-485 (Modbus RTU)	MPA-3-669	20.66.669



# MID Power Analyzer Front Switchboard-Door Mount Kit MPA-3-FM96

## Front Switchboard-Door Mount Kit

- 96x96mm Cut-Out
- 2-Piece Installation to allow terminal access



Description	Dimensions	Type	Part No.
Front Door Mount Kit to suit MPA-3-669 MID Power Analyzer	96x96mm	MPA-3-FM96	20.66.670

# Data-Logger Network Gateway Device ProData2

## Smart, Compact Data-Logger Gateway

- Ethernet TCP/IP
- RS-485 (Modbus RTU) Communication
- Modbus-Ethernet Gateway
- Memory 32 MB
- 15 Digital Inputs (Breaker Status, Pulse Input, Alarms....)
- 3 Digital Outputs (Switchable via Modbus, Weekly Timer, Treshold Value)
- 1 Temperature Measurement Input
- Saving of min-max values (with time stamp)
- 64 Weekly Timers



Aux Voltage	Description	Communication	Type	Part No.
20-250V AC; 20-300V DC	15 x Digital Inputs, 3 x Digital Outputs, 1 x Temperature Input (PT100/1000), Clock, Battery, 32 MB Memory	Ethernet TCP/IP, Master Gateway, RS-485 (Modbus RTU)	ProData2	52.24.011